








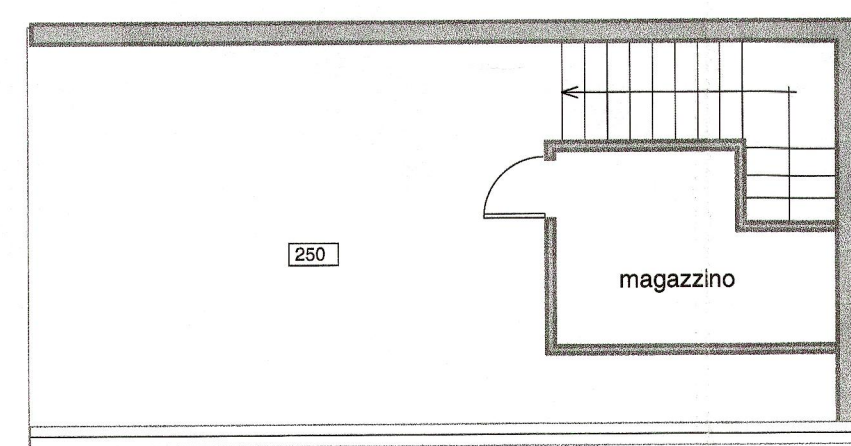
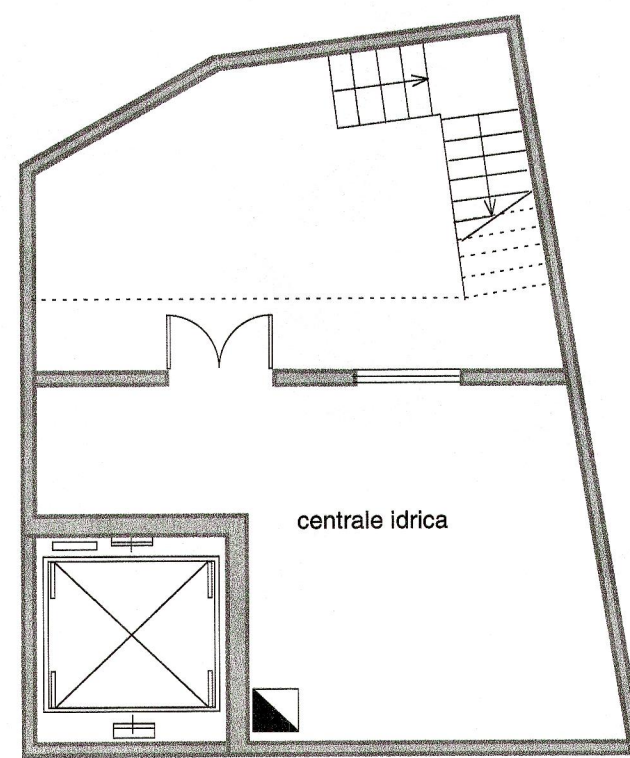


Legenda:

-  -P- rivelatore di fumo
-  Ep : estintore a polvere
-  Es : estintore a saclo
-  Ec : estintore portatile a CO2
-  via d'uscita orizzontale
-  via d'uscita verso l'alto
-  porta REI
-  maniglione antipanico
-  parete REI



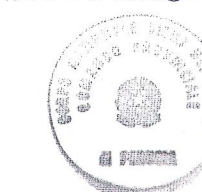
PIANTA SOPPALCO BAR



PIANTA CENTRALE IDRICA



COMANDO PROVINCIALE VIGILI DEL FUOCO - PERUGIA  
 Parere favorevole alla realizzazione del progetto  
 fini della prevenzione incendi alle condizioni del  
 nota del Comando N. 29862 del 20 GIU. 2000

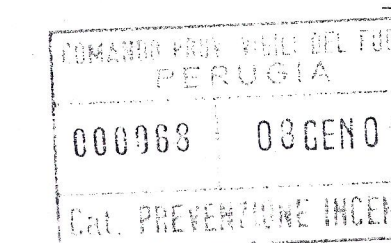


Ispettore Antincendi Coordinatore  
 (Dott. Ing. ...)



**UNIVERSITA' PER STRANIERI  
 PERUGIA**

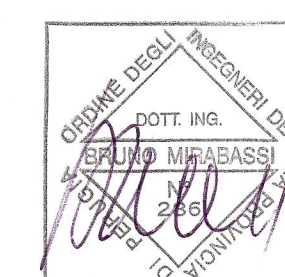
LAVORI DI ADEGUAMENTO ALLE NORME  
 DI PREVENZIONE INCENDI DEL "PALAZZO  
 GALLENGA" IN PERUGIA



**TAV.1**

**PIANTA  
 PIANO 2° SEMINTERRATO Q. 0.00**

Progetto e D.L.: Dott. Ing. Bruno Mirabassi  
 Consulenza: Dott. Ing. Gianni Drisaldi



SCALA: 1/100 DATA: DICEMBRE 2000



STUDIO CERNINI VIA PERUGIA 21 PERUGIA  
 DOTT. ARCH. GIULIO CARAVAGGI DOTT. ING. BRUNO MIRABASSI  
 TEL. 075/5003988 FAX 075/5003989